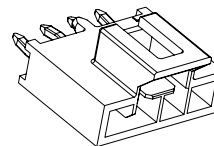


A Key (Only Black)

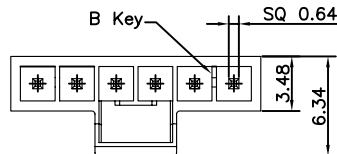
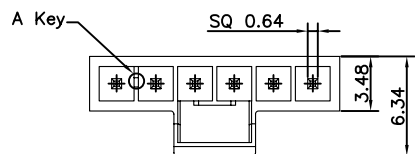


B Key (Only White)

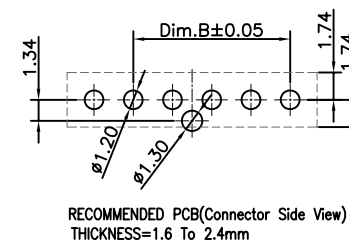
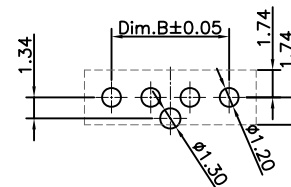
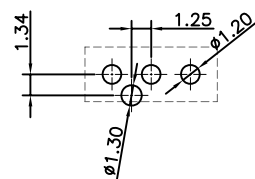
Specifications:  
 Current Rating:6.5A AC,DC  
 Voltage Rating:250V AC,DC  
 Contact Resistance:10mohm Max  
 Insulation Resistance:1000Mohm Min.  
 Withstanding Voltage:1500V AC/minute  
 Operating Temperature Range:-40°C~+105°C  
 Material And Finish:  
 Insulator:High Temp. Plastic(LCP UL94V-0)  
 Insulator Color:Black  
 Contact:Brass  
 Plating:Tin Plated

How To Order  
 WFVA25-XXX-X-LK-XX

BK:Black  
 WH:White  
 LK:With Lock  
 A:A Key(only Black)  
 B:B Key(Only White)  
 G:Gold Plated  
 T:Tin Plated  
 No. Of Positions  
 V:Strait Dip Type



Circuits	Dimension		Circuits	Dimension	
	A	B		A	B
2	5.95	2.5	06	15.95	12.50
3	8.45	5.0	07	18.45	15.00
4	10.95	7.5	08	20.95	17.50
5	13.45	10.0			



RoHS Compliant

F				DRAWN: Ken	GENERAL TOLERANCE: .X=±0.20 .XX=±0.15		DESCRIPTION: 2.5mm Wafer Single Row Dip With Lock Type	SIZE <b>A4</b>
E								
D				APPROVAL: Chao Peng	SCALE: 1:1	PART NO: WFVA25-XXX-X-LK-XX		
C					A 05-Mar-2018 (PC0001) Ken			SHEET: 1 / 1
B				REV DATE FILE BY		PROJECTION:		