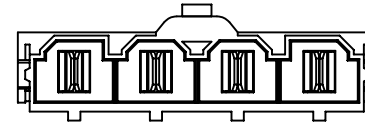
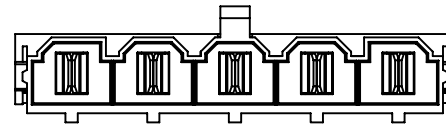


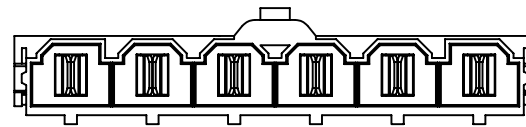
2 PIN



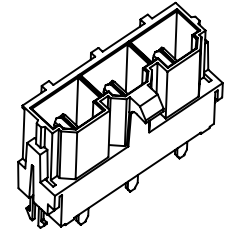
4 PIN



5 PIN



6 PIN



Specifications:  
 Current Rating:48A max.  
 Voltage Rating:600V  
 Contact Resistance:1.5m ohm. Max.  
 Insulation Resistance:1000M ohm. Min.  
 Withstanding Voltage:2200V AC For One Minute  
 Operating Temperature Range:-40°C To +105°C  
 Materials:

Insulator:High Temp. Plastic(Nylon46 UL94V-0)  
 Insulator Color:Black  
 Contact:Brass  
 Plating:Tin Plated

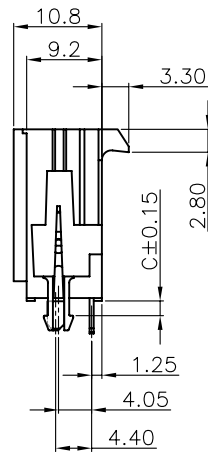
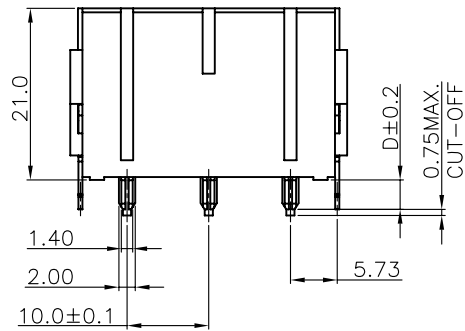
How To Order  
 WFV100-XXX-X

P.C.Board Thickness  
 1:1.57mm Nominal  
 2:2.36mm Nominal  
 3:3.18mm Nominal  
 4:6.35mm Nominal

T:Tin Plated  
 G:Gold Plated 1u" Over Nickel 50u"  
 SG>Selective Gold Plated 1u"  
 Tin Plated 100u" Over Nickel 50u"

No. Of Positions

V:Straight Type

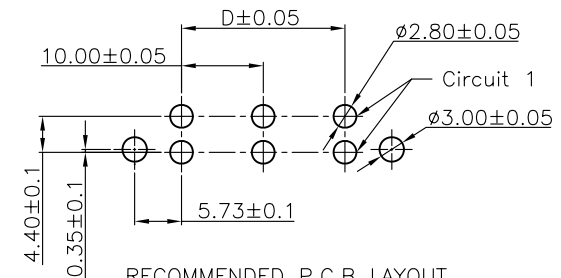


Dimension:

Pin No	Dim A	Dim B
WFV100-02X-X	—	20.90
WFV100-03X-X	20.0	30.90
WFV100-04X-X	30.0	40.90
WFV100-05X-X	40.0	50.90
WFV100-06X-X	50.0	60.90

Dip Dimension:

PART NO	Dim C	Dim D
WFV100-XXX-1	1.80	3.50
WFV100-XXX-2	2.60	5.10
WFV100-XXX-3	3.40	5.10
WFV100-XXX-4	6.58	8.30



RECOMMENDED P.C.B LAYOUT

RoHS Compliant

F				DRAWN:	GENERAL TOLERANCE:		DESCRIPTION:	SIZE		
E				Andrew	.X=±0.20 .XX=±0.15				10.0mm Socket Connector	A4
D				CHECKED:	UNIT: MM					
C				Jeremy Liu	SCALE: 1:1					
B				APPROVAL:	SHEET: 1 / 1	PART NO:				
A	25-May-2007	(PC0001)	Andrew	Mike Wu	PROJECTION:	WFV100-XXX-X				
REV	DATE	FILE	BY							