

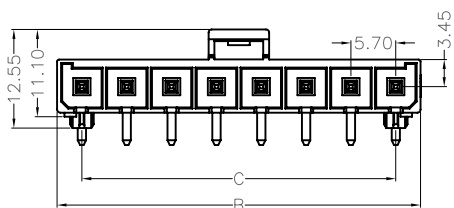
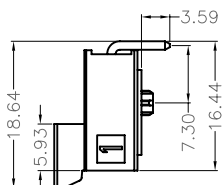
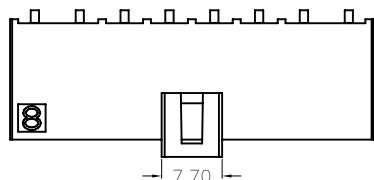
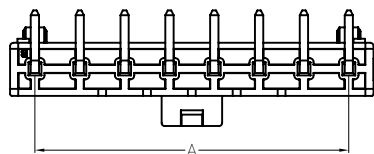
1

2

3

4

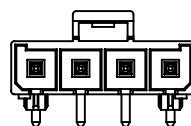
5



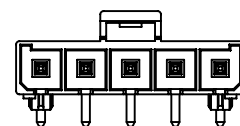
Dimensional Information(mm)

Circuits	N
DIM A	5.7xN-5.7
DIM B	(5.7xN-5.7)+3.15x2
DIM C	5.7xN-5.7x2

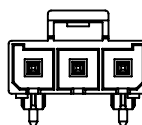
N=02~08



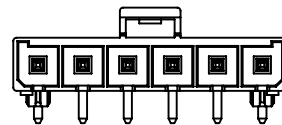
4 CKTS



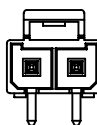
5 CKTS



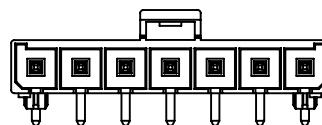
3 CKTS



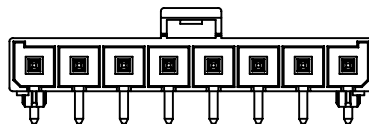
6 CKTS



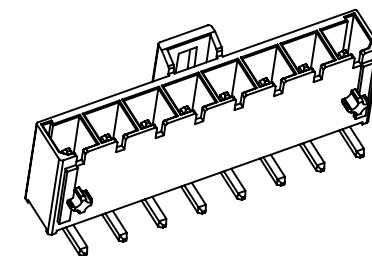
2 CKTS



7 CKTS



8 CKTS



Specifications:

Current Rating:23A AC/DC

Voltage Rating:600V AC/DC

Contact Resistance:10m ohm. Max.

Insulation Resistance:1000M ohm. Min.

Withstanding Voltage:2200V AC For One Minute

Operating Temperature Range:-40°C To +105°C

Materials:

Insulator:High Temp. Plastic(LCP UL94V-0)

Insulator Color:Black

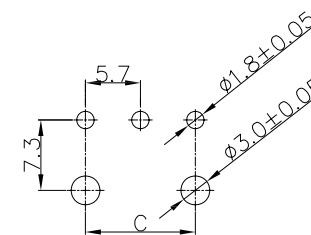
Contact:Brass

Plating:Tin Plated

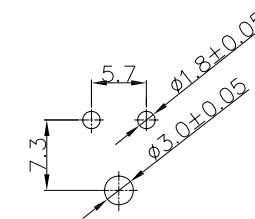
How To Order

WFDR57-XXT

└── No. Of Contacts
 └── DR:Double Row Right Angle Type



P B C board layout



2P PBC board layout

RoHS Compliant

F				DRAWN:	GENERAL TOLERANCE:		DESCRIPTION:	SIZE
E				Ken	.X=±0.20 .XX=±0.15			
D				CHECKED:	UNIT: MM	5.7mm Wafer R/A Dip Type	PART NO:	A4
C				Lily Chou	SCALE: 1:1			
B				APPROVAL:	SHEET: 1 / 1	WFRA57-XXT		
A	07-Mar-2021	(H0001)	Ken	Chao Peng	PROJECTION:			
REV	DATE	FILE	BY					