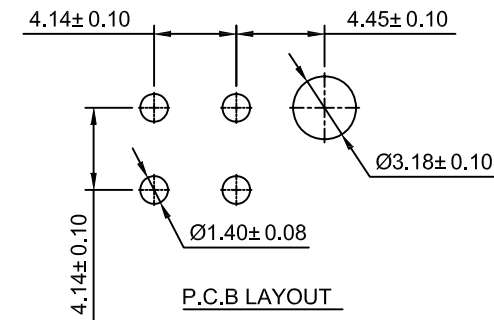


Specifications:  
 Current Rating:9.5A AC/DC  
 Voltage Rating:600V AC/DC  
 Contact Resistance:10m ohm. Max.  
 Insulation Resistance:1000M ohm. Min.  
 Withstanding Voltage:1500V AC For One Minute  
 Operating Temperature Range:-40°C To +105°C

Materials:  
 Insulator:Nylon 66 (UL94V-0)  
 Insulator Color:White  
 Contact:Brass  
 Plating:Tin Plated  
 How To Order:  
 WFDV414-04X  
 T:Tin Plated  
 SG:Selective Gold  
 SG30:Selective Gold 30u"  
 No. of Contacts  
 Double Row Straight Type



RoHS Compliant

F				DRAWN:	GENERAL TOLERANCE:		DESCRIPTION: 4.14mm Power Wafer Dip Straight Type	SIZE <b>A4</b>
E			Andrew	.X=±0.20 .XX=±0.15				
D			CHECKED:	UNIT: MM				
C			Jeremy Liu	SCALE: 1:1				
B				APPROVAL:	SHEET: 1 / 2	PART NO:		
A	22-Oct-2016	(PC0001)	Andrew	Mike Wu	PROJECTION:	WFDV414-04X		
REV	DATE	FILE	BY					