

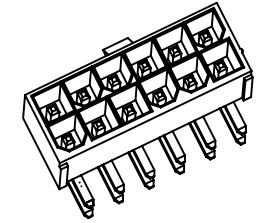
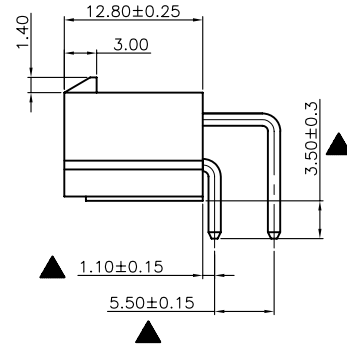
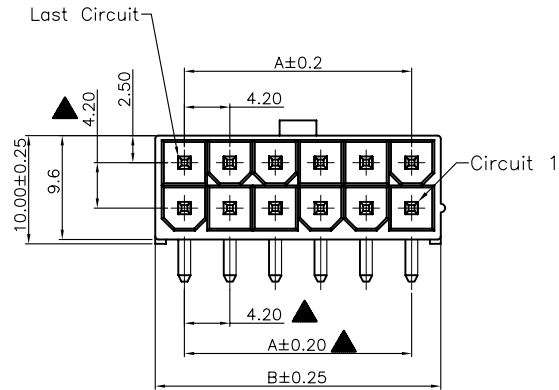
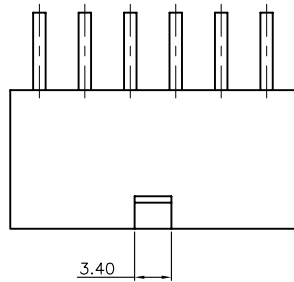
1

2

3

4

5



Specifications:

Current Rating:9.0A AC/DC
 Voltage Rating:600V AC/DC
 Contact Resistance:10m ohm. Max.
 Insulation Resistance:1000M ohm. Min.
 Withstanding Voltage:600V AC For One Minute
 Operating Temperature Range:-40°C To +105°C
 Materials:

Insulator:High Temp. Plastic(Nylon66 UL94V-0)
 Insulator Color:White
 Contact:Brass
 Plating:Tin Plated

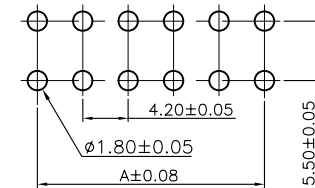
How To Order

WFDR42-XX-PN

- 01:Without Post
- No. Of Contacts
- DR:Double Row Right Angle Type

Dimension Information:

Circuits	Dim A	Dim B	Circuits	Dim A	Dim B
2	—	5.4	14	25.2	30.6
4	4.2	9.6	16	29.4	34.8
6	8.4	13.8	18	33.6	39.0
8	12.6	18.0	20	37.8	43.2
10	16.8	22.2	22	42.0	47.4
12	21.0	26.4	24	46.2	51.6



RECOMMENDED P.C.B. LAYOUT

RoHS Compliant

F				DRAWN:	GENERAL TOLERANCE:		DESCRIPTION:	SIZE
E				Ken	.X=±0.20			
D				CHECKED:	.XX=±0.15			
C				Lily Chou	UNIT: MM			
B				APPROVAL:	SCALE: 1:1	DESCRIPTION:	4.2mm Wafer R/A Type	A4
A	22-May-2014	(H0030)	Ken	Chao Peng	SHEET: 1 / 2	PART NO:	WFDR42-XX-PN	
REV	DATE	FILE	BY		PROJECTION:			

