

1

2

3

4

5

Specifications:

Current rating:5.0A AC,DC

Voltage rating:250V AC, DC

Contact resistance:10m ohm Max

Insulation resistance:1000M ohm Min

Withstanding voltage:AC 1500V AC/minute

Operating Temperature:-25°C ~ +105°C

Materials:

Insulator:High Temp Plastic (UL94V-0)

Insulator Color:Black

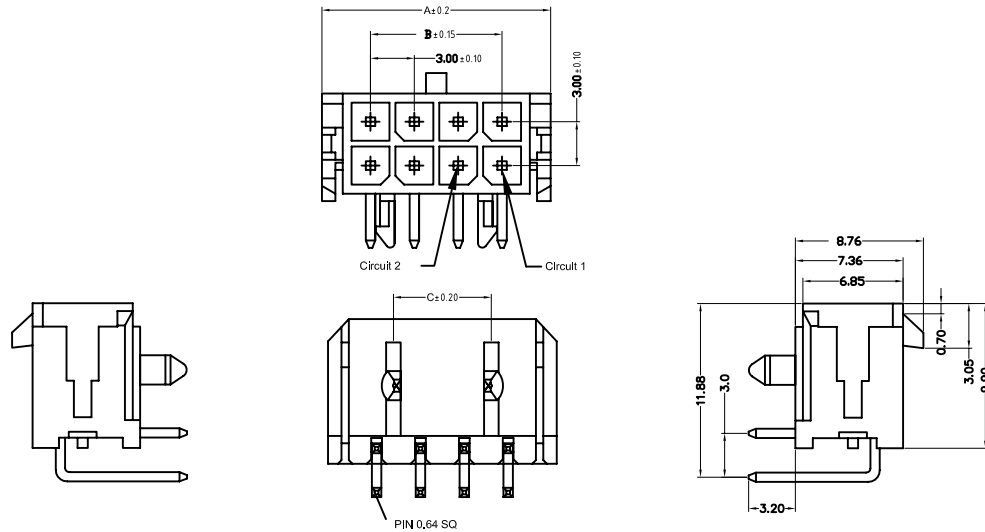
Contact :Copper Alloy

Finish:Tin Plated

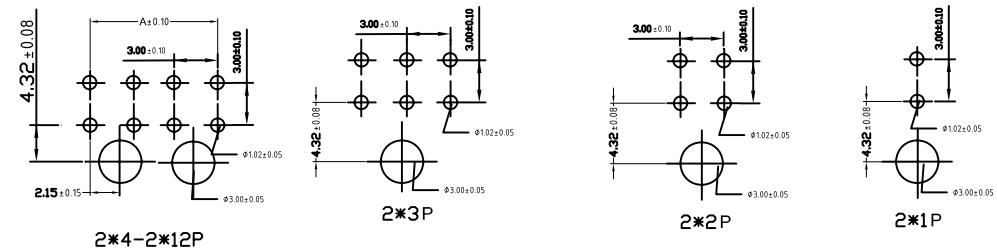
How to Order

WFDR30-XXT

No.Of Positions
Right Angle



Circuits	Dimension			Circuits	Dimension		
	A	B	C		A	B	C
2	6.7	—	2.9	14	24.7	18.0	16.6
4	9.7	3.0	2.9	16	27.7	21.0	19.6
6	12.7	6.0	2.9	18	30.7	24.0	22.6
8	15.7	9.0	7.6	20	33.7	27.0	25.6
10	18.7	12.0	10.6	22	36.7	30.0	28.6
12	21.7	15.0	13.6	24	39.7	33.0	31.6



PCB LAYOUT

RoHS Compliant

F				DRAWN:	GENERAL TOLERANCE:		DESCRIPTION:	SIZE
E				Ken	.X=±0.20			
D				CHECKED:	.XX=±0.15			
C				Lily Chou	UNIT: MM			
B	03-Jan-2020	(H0085)	Ken	APPROVAL:	SCALE: 1:1	DESCRIPTION:	3.0mm Power Wafer R/A Type	A4
A	01-Aug-2016	(H0085)	Ken	Chao Peng	SHEET: 1 / 2	PART NO:	WFDR30-XXT	
REV	DATE	FILE	BY		PROJECTION:			

DRAWN:
Ken

CHECKED:
Lily Chou

APPROVAL:
Chao Peng

GENERAL TOLERANCE:
.X=±0.20
.XX=±0.15

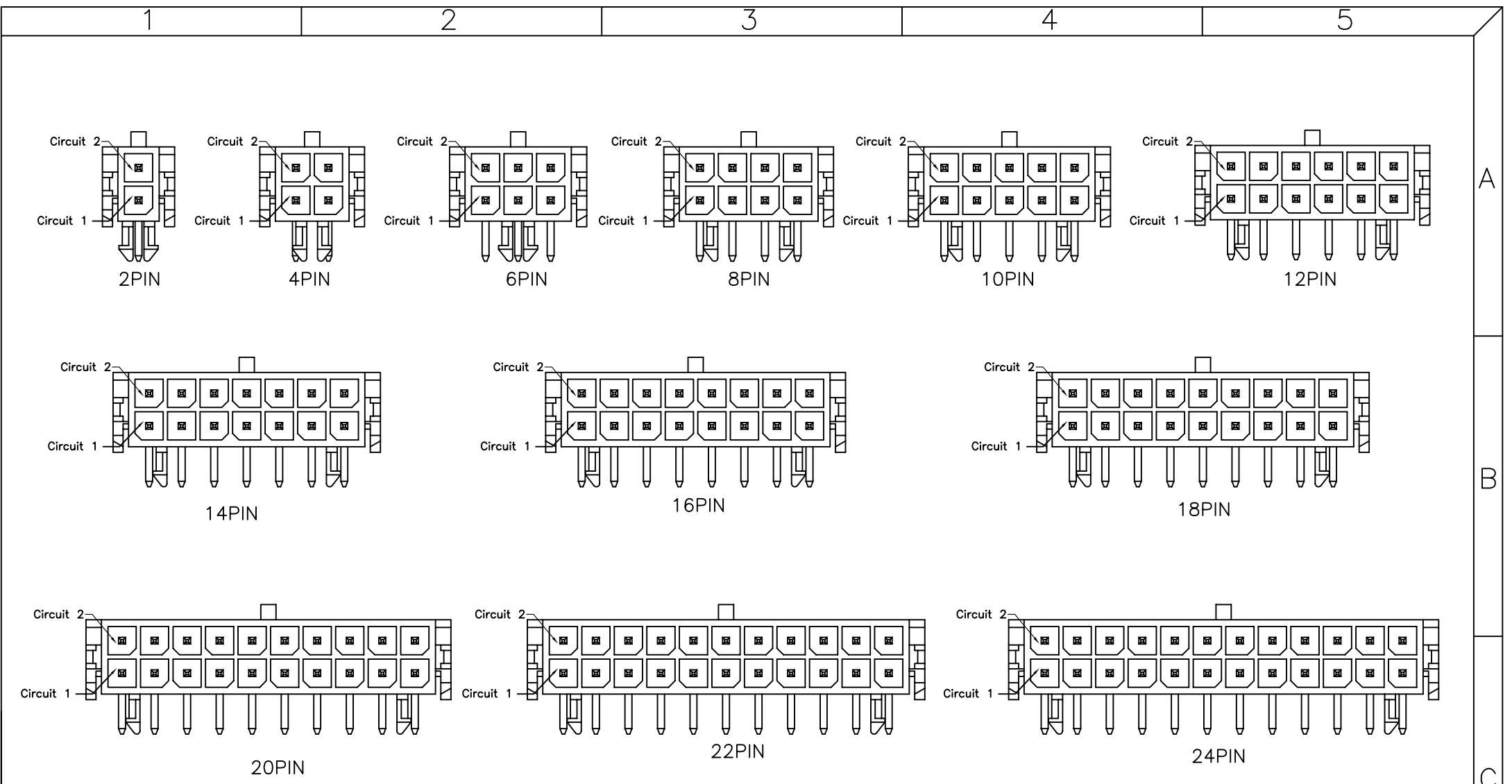
UNIT: MM
SCALE: 1:1
SHEET: 1 / 2
PROJECTION:

DESCRIPTION:
3.0mm Power Wafer R/A Type

PART NO:
WFDR30-XXT


SIZE

A4



2~24P Protection Key Drawing(Ref.)

RoHS Compliant

F				DRAWN:	GENERAL TOLERANCE:			SIZE
E				Ken	.X=±0.20 .XX=±0.15			
D				CHECKED:	UNIT: MM	DESCRIPTION:		A4
C				Lily Chou	SCALE: 1:1			
B				APPROVAL:	SHEET: 2 / 2	PART NO:		
A	01-Aug-2016	(H0085)	Ken	Chao Peng	PROJECTION:			WFDR30-XXT
REV	DATE	FILE	BY		