

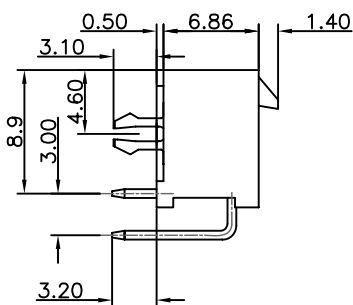
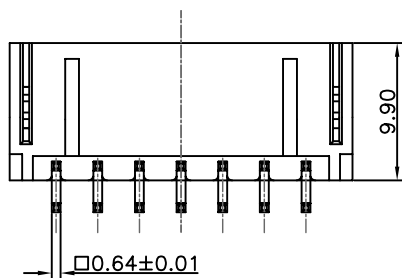
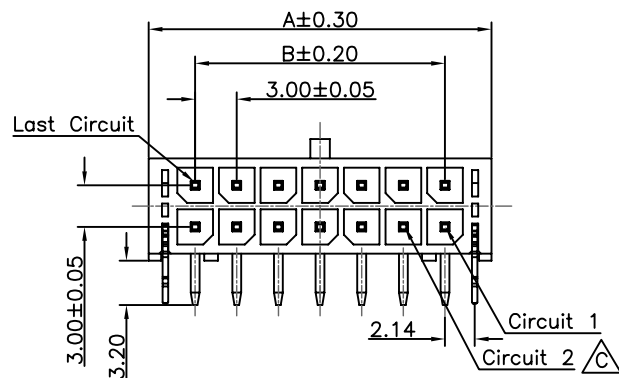
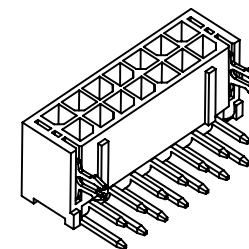
1

2

3

4

5



Circuits	Dimension		Circuits	Dimension	
	A	B		A	B
2	6.7	—	14	24.7	18.0
4	9.7	3.0	16	27.7	21.0
6	12.7	6.0	18	30.7	24.0
8	15.7	9.0	20	33.7	27.0
10	18.7	12.0	22	36.7	30.0
12	21.7	15.0	24	39.7	33.0

Specifications:

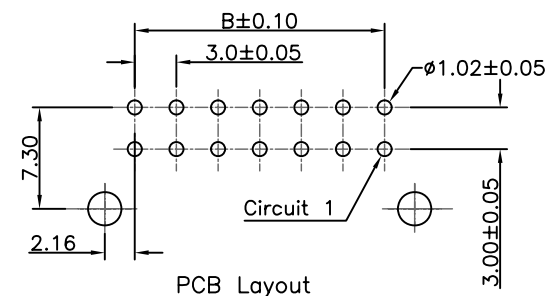
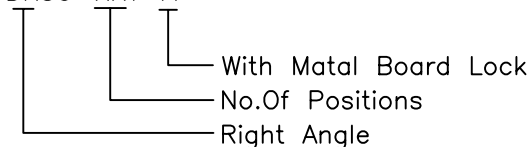
Current rating:5.0A AC,DC
 Voltage rating:250V AC, DC
 Contact testance:10m ohm Max
 Insulation resistance:1000M ohm Min
 Withstanding voltage:AC 1500V AC/minute
 Operating Temperature:-25°C ~ +105°C

Materials:

Insulator:High Temp Plastic (Nylon 46 UL94V-0)
 Insulator Color:Black
 Contact :Copper Alloy
 Finish:Tin Plated

How to Order

WFDR30-XXT-A



RoHS Compliant

REV	DATE	FILE	BY
A	18-Oct-2014	(PC0001)	Sea

DRAWN:
Mary

CHECKED:
Jeremy Liu

APPROVAL:
Mike Wu

GENERAL TOLERANCE:
 .X=±0.2
 .XX=±0.15

UNIT: MM

SCALE:

SHEET: 1 / 2

PROJECTION:



DESCRIPTION:
3.0mm Pitch Power Wafer Right Angle Type

PART NO:
WFDR30-XXT-A

SIZE

A4