

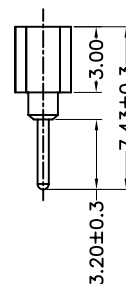
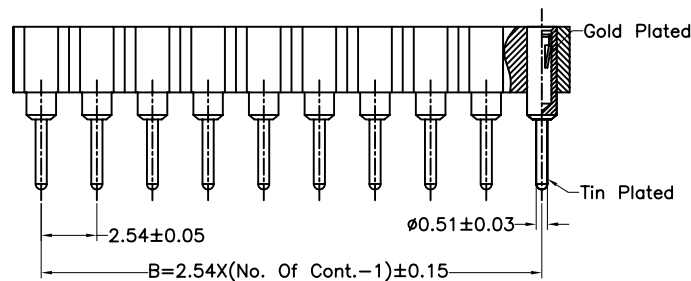
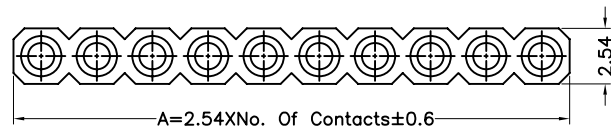
1

2

3

4

5



Specifications:

Current rating:3.0A AC/DC

Voltage rating:100V AC/DC

Contact resistance:10m ohm. max.

Insulator resistance:5000M ohm. Min.

Withstanding voltage:1000V AC for one minute

Operating temperature range:-55°C to +125°C

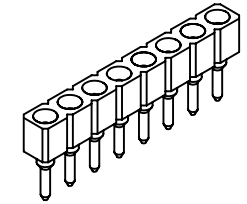
Material and Finish:

Insulator:High Temp. Plastic(PPS UL94V-0)

Standard Color:Black

Contact:Beryllium Copper(Becu) Tin Plated

Sleeve Barrel:Brass,Tin Plated



How To Order

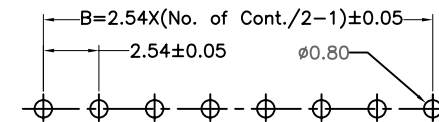
MCSV254-XX

No. Of Contacts

SV:Socket Straight Type

Dimension:

Circuits	Dim.A	Dim.B	Circuits	Dim.A	Dim.B	Circuits	Dim.A	Dim.B	Circuits	Dim.A	Dim.B
2	5.08	2.54	12	30.48	27.94	22	55.88	53.34	32	81.28	78.74
3	7.62	5.08	13	33.02	30.48	23	58.42	55.88	33	83.82	81.28
4	10.16	7.62	14	35.56	33.02	24	60.96	58.42	34	86.36	83.82
5	12.70	10.16	15	38.10	35.56	25	63.50	60.96	35	88.90	86.36
6	15.24	12.70	16	40.64	38.10	26	66.04	63.50	36	91.44	88.90
7	17.78	15.24	17	43.18	40.64	27	68.58	66.04	37	93.98	91.44
8	20.32	17.78	18	45.72	43.18	28	71.12	68.58	38	96.52	93.98
9	22.86	20.32	19	48.26	45.72	29	73.66	71.12	39	99.06	96.52
10	25.40	22.86	20	50.80	48.26	30	76.20	73.66	40	101.60	99.06
11	27.94	25.40	21	53.34	50.80	31	78.74	76.20			



PCB LAYOUT

RoHS Compliant

E				DRAWN:	GENERAL TOLERANCE:			SIZE
D				Ken Wang	.X=±0.2 .XX=±0.15			
C				CHECKED:	UNIT: MM	DESCRIPTION:		A4
B				Lily Chou	SCALE:2:1			
A	28-Jan-2016	(H0090)	Ken Wang	APPROVAL:	SHEET: 1 / 1	PART NO:		
REV	DATE	FILE	BY	Chao Peng	PROJECTION:			MCSV254-XX

A

B

C

D