

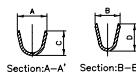
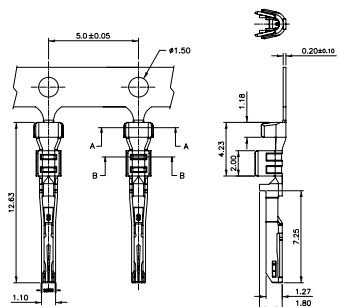
1

2

3

4

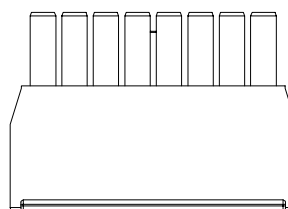
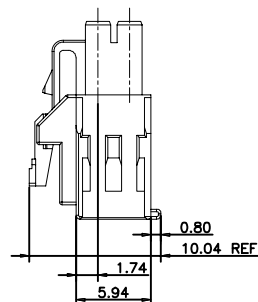
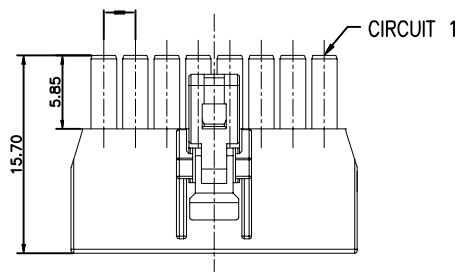
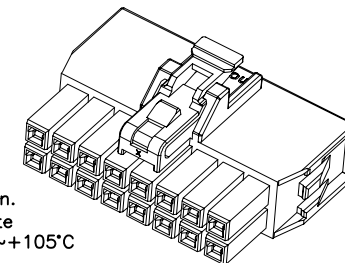
5



HST25X-XXXX

Part No	Wire Apply	A	B	C	D
HST25X-2022	20-22AWG	2.33Ref.	1.97Ref.	1.94	2.14
HST25X-2426	24-26AWG	2.12Ref.	1.39Ref.	2.00	1.45

Specifications:  
 Current Rating:14.0A AC/DC  
 Voltage Rating:400V AC/DC  
 Contact Resistance:10m ohm. Max.  
 Insulation Resistance:1000M ohm. Min.  
 Withstanding Voltage:1.800V AC/Minute  
 Operating Temperature Range:-40°C~+105°C  
 Material and Finish  
 Insulator:Nylon 4T UL94V-0  
 Color:Black  
 Contact:Phosphor Bronze  
 Plating:Tin Plated  
 Recommended Insulator

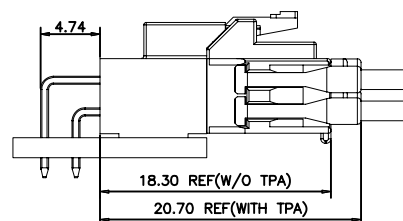
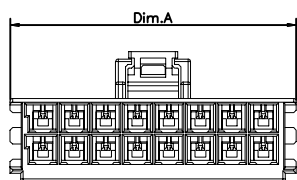


How To Order  
 HS25-XX-KX-XX

BK:Black(only Key A)  
 WH:White (only Key B)  
 KA:With Lock A Key  
 KB:With Lock B Key  
 No. Of Positions

Dimension:

Pos.	Dimension:
04	7.70
06	10.20
08	12.70
10	15.20
12	17.70
14	20.20
16	22.70



RoHS Compliant

F				DRAWN:	GENERAL TOLERANCE:		SIZE
E				Ken	.X=±0.20 .XX=±0.15		
D				CHECKED:	UNIT: MM	DESCRIPTION: 2.5mm Female Housing With Lock	A4
C				Lily Chou	SCALE: 1:1		
B				APPROVAL:	SHEET: 1 / 2	PART NO: HS25-XX-KX-XX	
A	04-Nov-2019	(PC0001)	Ken	Chao Peng	PROJECTION:		
REV	DATE	FILE	BY				