

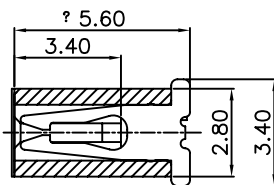
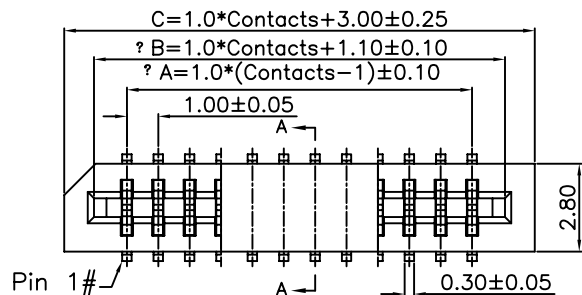
1

2

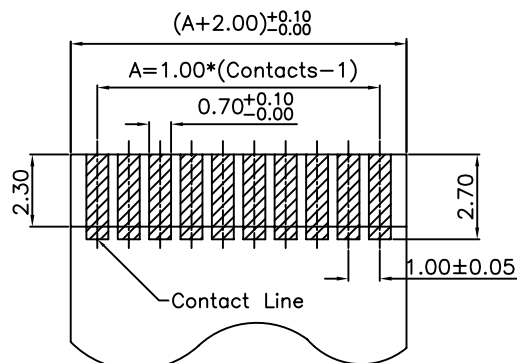
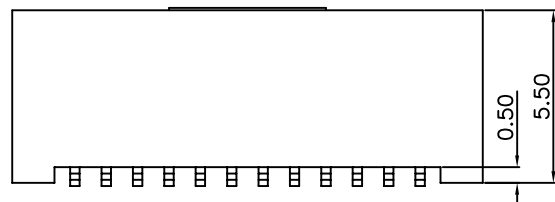
3

4

5



Section:A-A



Thickness: 0.3±0.03mm.  
FPC Dimension  
(Reference)

Dimension:

Pin	Dim A	Dim B	Dim C	Pin	Dim A	Dim B	Dim C	Pin	Dim A	Dim B	Dim C
3	2.00	4.10	6.00	13	12.00	14.10	16.00	23	22.00	24.10	26.00
4	3.00	5.10	7.00	14	13.00	15.10	17.00	24	23.00	25.10	27.00
5	4.00	6.10	8.00	15	14.00	16.10	18.00	25	24.00	26.10	28.00
6	5.00	7.10	9.00	16	15.00	17.10	19.00	26	25.00	27.10	29.00
7	6.00	8.10	10.00	17	16.00	18.10	20.00	27	26.00	28.10	30.00
8	7.00	9.10	11.00	18	17.00	19.10	21.00	28	27.00	29.10	31.00
9	8.00	10.10	12.00	19	18.00	20.10	22.00	29	28.00	30.10	32.00
10	9.00	11.10	13.00	20	19.00	21.10	23.00	30	29.00	31.10	33.00
11	10.00	12.10	14.00	21	20.00	22.10	24.00				
12	11.00	13.10	15.00	22	21.00	23.10	25.00				

## Specifications:

Current Rating:1.0 A AC/DC

Voltage Rating:100V AC/DC

Contact Resistance:30m Ohm. Max.

Insulator Resistance:100M Ohm. Min.

Withstanding Voltage: 500V AC For One Minute

Operating Temperature Range:-25°C~+105°C

Material and Finish

Insulator:High Temp. Plastic(Nylon 6T UL94V-0)

Insulator Color:Black

Contact: Phosphor Bronze

Plated: Tin Plated

Package:700PCS/Reel

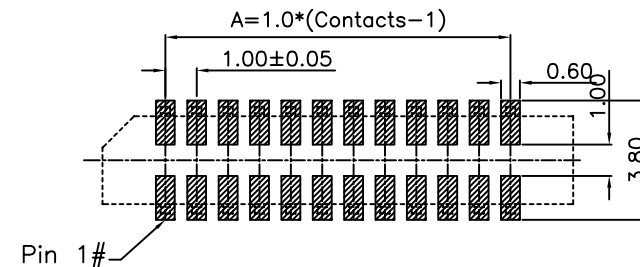
## How To Order:

FPCVSM10-XX-MCR

MCR:Mylar+Tape&amp;Reel

No. of Contacts

VSM:Straight SMD Type



PCB LAYOUT

RoHS Compliant

F					
E					
D					
C					
B					
A	18-Mar-2022	(PC0001)	Ken		
REV	DATE	FILE	BY		

DRAWN:  
Ken  
CHECKED:  
Lily Chou  
APPROVAL:  
Chao Peng

GENERAL TOLERANCE:  
.X=±0.20  
.XX=±0.15

UNIT: MM  
SCALE: 1:1  
SHEET: 1 / 1  
PROJECTION:

DESCRIPTION:  
1.0mm FPC Vertical SMT Type

PART NO:  
FPCVSM10-XX-MCR

SIZE

**A4**