

MATING HEIGHT  
SCALE:1.25:1

Specifications

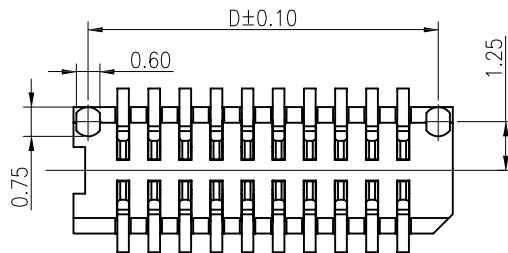
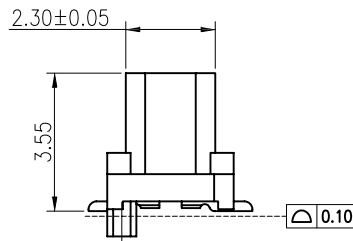
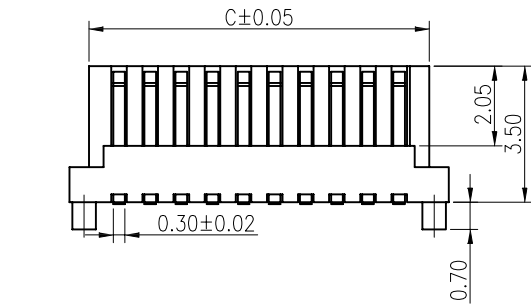
Current Rating:0.5A AC/DC  
Voltage Rating:100V AC/DC  
Contact Resistance:40m ohm. Max  
Insulation Resistance:100Mohm min  
Withstanding Voltage:500V(r.m.s) For one Minute  
Operating Temperature Range:-40°C to 105°C  
Material and Finish  
Insulator:High Temp. Plastic( Nylon 9T UL94V-0)  
Color:Beige

Conact :Copper Alloy  
Plated:Gold Plated  
Package :1000pcs/Reel

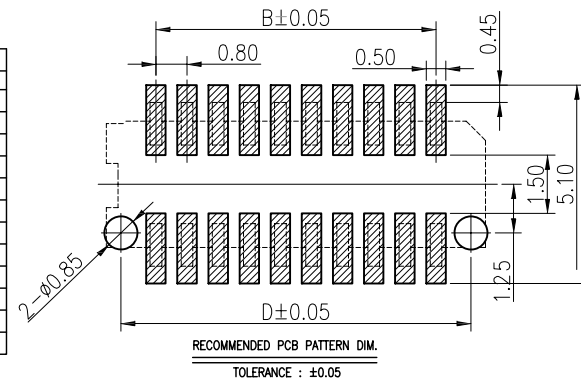
How To Order:

BBS08-XXG-355B-XX-TR

- Tape&Reel
- Blank With Post
- PN:Without Post
- Height 3.55mm
- Gold Plated
- No. of Contacts



NO. of contacts	Dimensions				NO. of contacts	Dimensions			
	A	B	C	D		A	B	C	D
4	3.35	0.80	2.35	2.60	30	13.75	11.20	12.75	13.00
6	4.15	1.60	3.15	3.40	32	14.55	12.00	13.55	13.80
8	4.95	2.40	3.95	4.20	34	15.35	12.80	14.35	14.60
10	5.75	3.20	4.75	5.00	36	16.15	13.60	15.15	15.40
12	6.55	4.00	5.55	5.80	38	16.95	14.40	15.95	16.20
14	7.35	4.80	6.35	6.60	40	17.75	15.20	16.75	17.00
16	8.15	5.60	7.15	7.40	42	18.55	16.00	17.55	17.80
18	8.95	6.40	7.95	8.20	44	19.35	16.80	18.35	18.60
20	9.75	7.20	8.75	9.00	46	20.15	17.60	19.15	19.40
22	10.55	8.00	9.55	9.80	48	20.95	18.40	19.95	20.20
24	11.35	8.80	10.35	10.60	50	21.75	19.20	20.75	21.00
26	12.15	9.60	11.15	11.40	52	22.55	20.00	21.55	21.80
28	12.95	10.40	11.95	12.20					

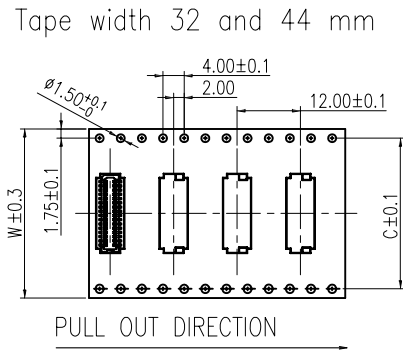
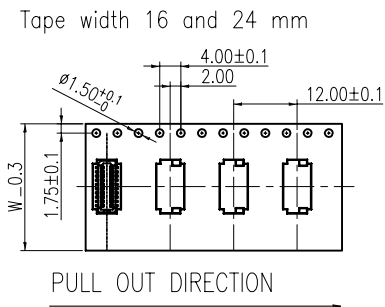


F			
E			
D			
C			
B			
A	29-Jan-2017	(PC0001)	Ken
REV	DATE	FILE	BY

DRAWN:	Ken
CHECKED:	Lily Chou
APPROVAL:	Chao Peng
GENERAL TOLERANCE:	.X=±0.20 .XX=±0.15
UNIT:	MM
SCALE:	1:1
SHEET:	1 / 1
PROJECTION:	

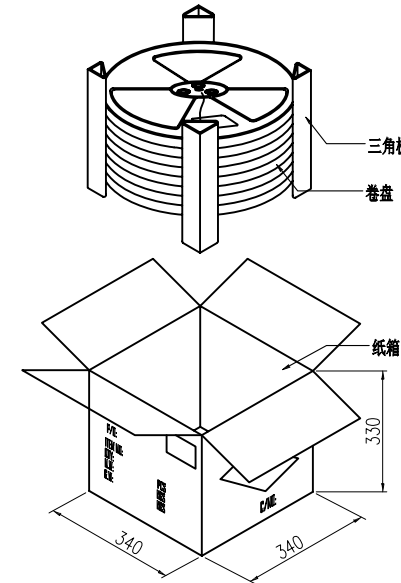
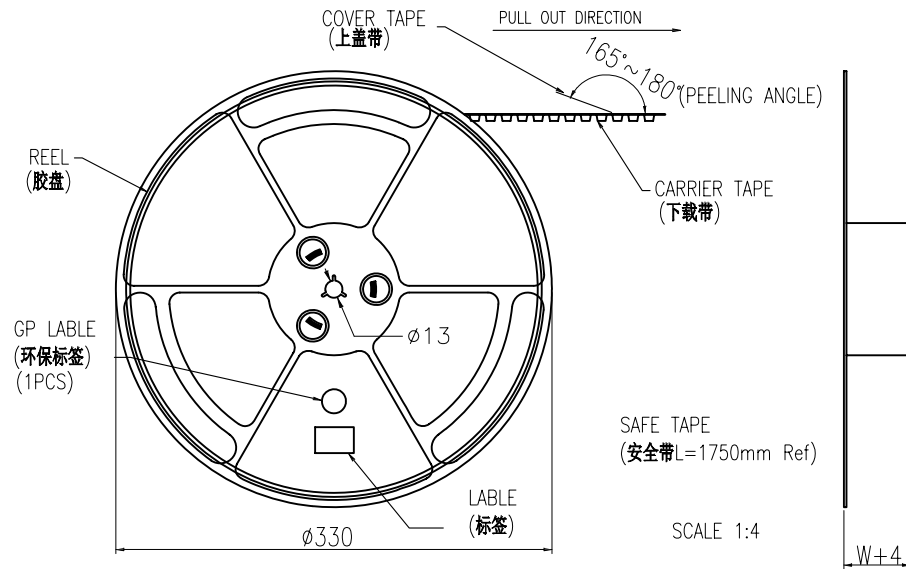
		DESCRIPTION:	0.8mm Board To Board Socket 3.55mm Height SMT Type
		PART NO:	BBS08-XXG-355B-XX-TR

SIZE	<b>A4</b>
------	-----------



NOTE:

- 1.10 Sprocket hole pitch cumulative tolerance  $\pm 0.20$ .
2. Carrier camber is within 1mm in 100mm.
3. Material: black conductive polystyrene alloy.
4. Material Thickness:  $0.3 \pm 0.05$ mm.
5. All dimensions meet EIA-481-B requirements.
6. 5000pcs Pef Reel.
7. For tape width(dim W)16 and 24mm pilot holes are provided on one sides.  
For tape width(dim W)32, 44 and 56mm pilot holes are provided on both sides.



PIN NO.	W	C	PCS /REEL	REEL/CARTON	SUM(PCS)
4PIN~20PIN	16	-	1000	12	12000
21PIN~40PIN	24	-	1000	10	10000
41Pin~50PIN	32	28.4	1000	8	8000
51Pin~60PIN	44	40.4	1000	6	6000

F				DRAWN:	GENERAL TOLERANCE:
E				Ken	.X = $\pm 0.20$
D				CHECKED:	.XX = $\pm 0.15$
C				Lily Chou	UNIT: MM
B				APPROVAL:	SCALE: 1:1
A	29-Jan-2017	(PC0001)	Ken	Chao Peng	SHEET: 1 / 1
REV	DATE	FILE	BY		PROJECTION:

DESCRIPTION: 0.8mm Board To Board Socket  
3.55mm Height SMT Type

PART NO: TPK-BBS08-XXG-355B-TR

SIZE  
**A4**