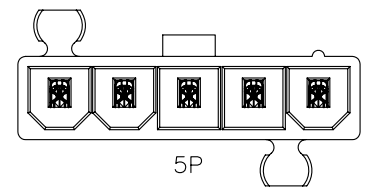


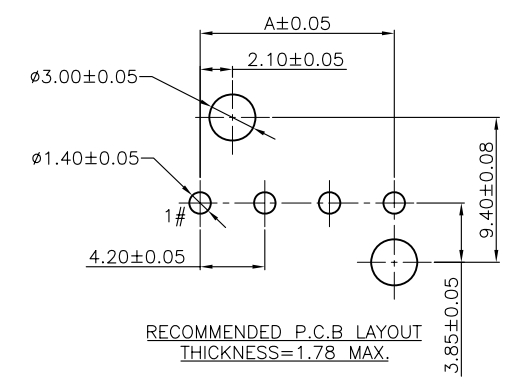
Dimension Information:

Pos.	Dim.A	Dim.B
02	4.20	9.60
03	8.40	13.80
04	12.60	18.00
05	16.80	22.20



Specifications:

Current Rating:9.0A AC/DC
 Voltage Rating:600V AC/DC
 Contact Resistance:10m Ohm. Max.
 Insulation Resistance:1,000M Ohm. Min.
 Withstanding Voltage:1,500V AC For One Minute
 Operating Temperature Range:-40°C ~ +105°C
 Materials And Finish
 Insulator:Nylon66 (UL94V-2)
 Insulator Color:White
 Contact:Copper Alloy
 Plated:Tin Plated
 How To Order
 WFVA42-XX-PG-XX
 Blank:UL94V-2 Color:Transparent
 V0:UL94V-0 Color:White
 With Post
 No. Of Positions
 VA:Straight Single Row



RoHS Compliant

F				DRAWN:	GENERAL TOLERANCE:		DESCRIPTION: 4.2mm Power Wafer Straight Type	SIZE A4
E			Ken	.X=±0.20 .XX=±0.15				
D			CHECKED:	UNIT: MM				
C			Lily Chou	SCALE: 1:1				
B			APPROVAL:	SHEET: 1 / 2				
A	01-SEP-2013	(PC0001)	Ken	Chao Peng	PROJECTION:	PART NO:	WFVA42-XX-PG-XX	
REV	DATE	FILE	BY					