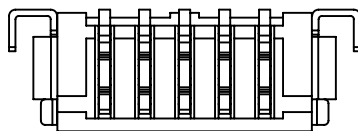
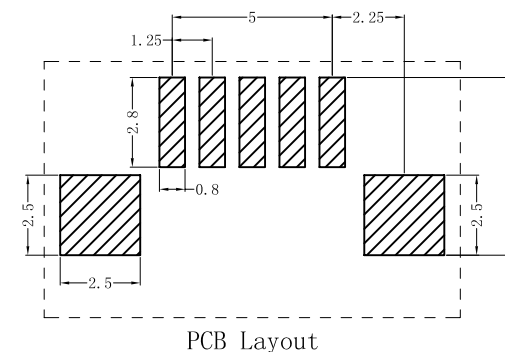


Specifications:
 Current rating:1.0A AC,DC
 Voltage rating:125V AC,DC
 Contact resistance:20m ohm.Max
 Insulation resistance:100M ohm.Min
 Withstanding voltage:250V AC/minute
 Operating temperature range:-40°C~+85°C
 Material:
 Insulator:High Temp. Plastic(LCP 94V-0)
 Insulator Color:Beige
 Contact:Brass
 Plated:Tin Plated
 Package:2000pcs/Reel

How To Order:
 WF7RSM125-XX-TR
 — Tape & Reel
 — No.Of Position
 — Right Angle SMT Type



PIN	A	B	C	PIN	A	B	C
2	7.25	3.15	1.25	10	17.25	13.15	11.25
3	8.50	4.40	2.50	11	18.50	14.40	12.50
4	9.75	5.65	3.75	12	19.75	15.65	13.75
5	11.00	6.90	5.00	13	21.00	16.90	15.00
6	12.25	8.15	6.25	14	22.25	18.15	16.25
7	13.50	9.40	7.50	15	23.50	19.40	17.50
8	14.75	10.65	8.75	16	24.75	20.65	18.75
9	16.00	11.90	10.00				



RoHS Compliant

F			
E			
D			
C			
B			
A	01-SEP-2021	(H0001)	Ken
REV	DATE	FILE	BY

DRAWN: Ken	GENERAL TOLERANCE: .X=±0.20 .XX=±0.15
CHECKED: Lily Chou	
APPROVAL: Chao Peng	UNIT: MM
	SCALE: 1:1
	SHEET: 1 / 1
	PROJECTION:

DESCRIPTION: 1.25mm Wafer R/A SMT Type(DF13 Series)	SIZE
PART NO: WF7RSM125-XX-TR	A4