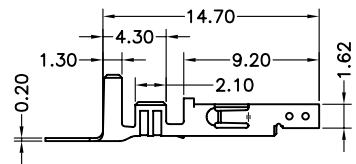


Specifications:
 Current Rating:9.0A AC/DC
 Voltage Rating:600V AC/DC
 Contact Resistance:10M Ohm. Max.
 Insulation Resistance:1,000M Ohm. Min.
 Withstanding Voltage:1500V AC/Minute
 Operating Temperature Range:-40°C ~ +105°C
 Application Wire:Awg 16~22
 Material And Finish:
 Insulator:Nylon 66 (UL94V-2)
 Color:Transparent White
 Contact:Brass
 Finish:Nickel Plated
 How To Order
 HSD42-XX-XX

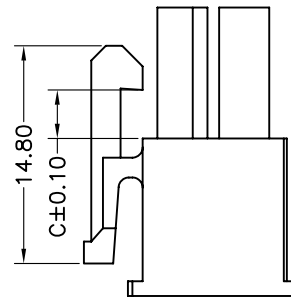
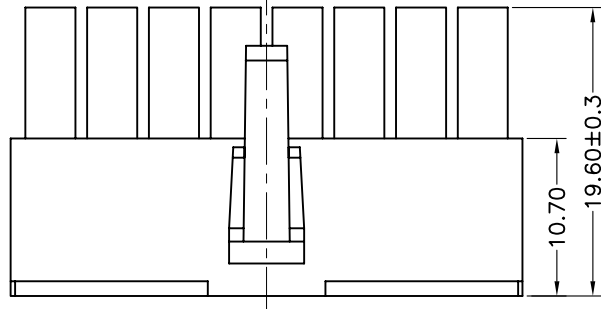
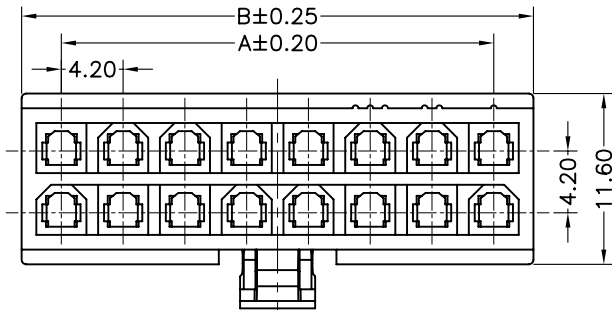
Blank :White
 BK:Black
 No. of Positions

Dimension:

Circuits	DIM.A	DIM.B	DIM.C
2		5.40	3.30
4	4.20	9.60	3.30
6	8.40	13.80	3.30
8	12.60	18.00	3.30
10	16.80	22.20	3.30
12	21.00	26.40	3.30
14	25.20	30.60	3.30
16	29.40	34.80	3.30
18	33.60	39.00	3.60
20	37.80	43.20	3.60
22	42.00	47.40	3.60
24	46.20	51.60	3.60



HST42N

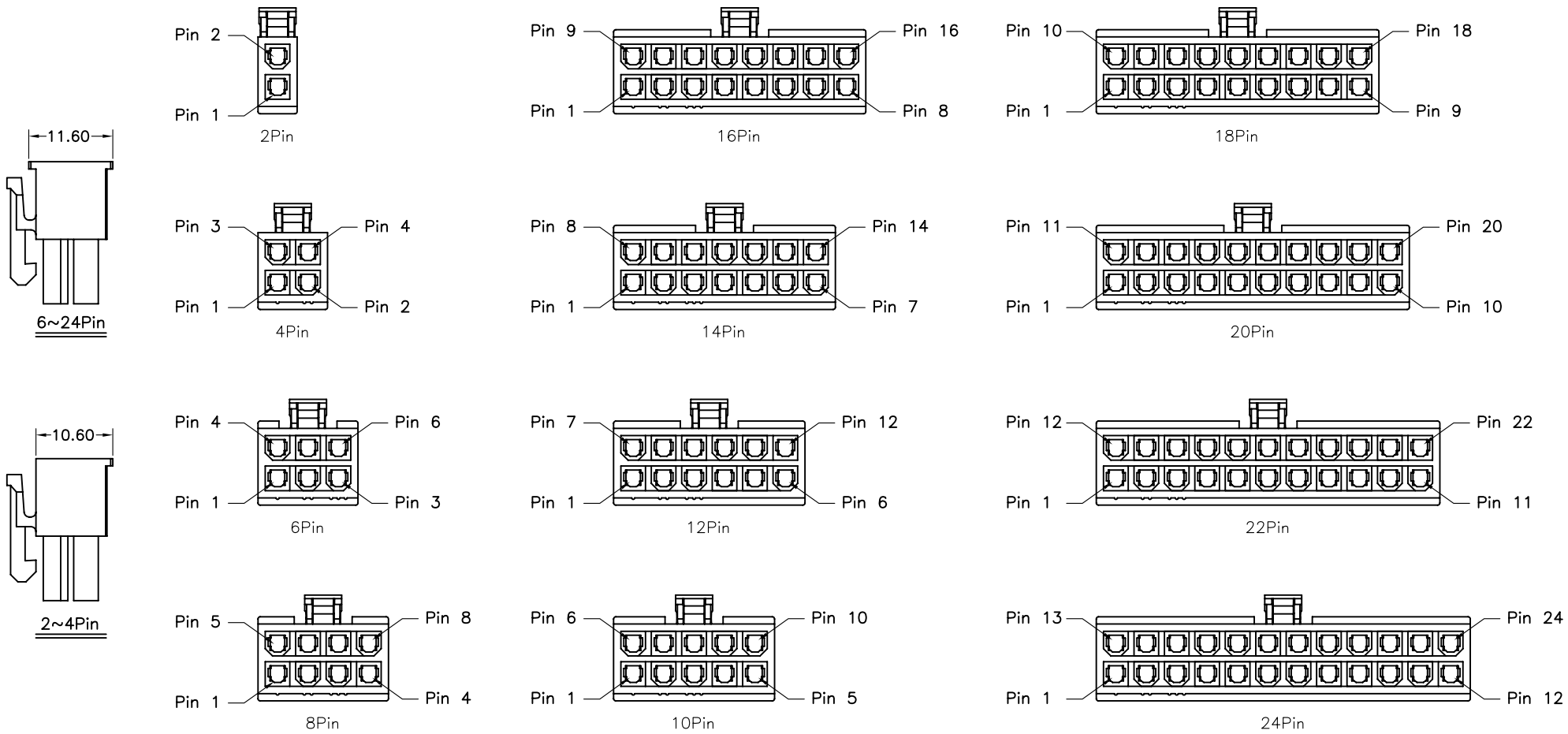


F			
E			
D			
C			
B			
A	01-SEP-2009	(PC0001)	Ken
REV	DATE	FILE	BY


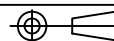
DRAWN: Ken
 CHECKED: Lily Chou
 APPROVAL: Chao Peng
 GENERAL TOLERANCE:
 .X=±0.20
 .XX=±0.15
 UNIT: MM
 SCALE: 1:2
 SHEET: 1 / 2
 PROJECTION:

HOYATO
 Connector supplies
 DESCRIPTION: 4.2mm Mini Fit Double Row Female Housing & Terminal
 PART NO: HSD42-XX-XX

SIZE
A4



2~24Pin 防呆示意圖(Ref.)

F				DRAWN:	GENERAL TOLERANCE:		DESCRIPTION: 4.2mm Mini Fit Double Row Female Housing & Terminal	SIZE A4
E			Ken	.X=±0.20 .XX=±0.15				
D			CHECKED:	UNIT: MM	PART NO:			
C			Lily Chou	SCALE: 1:2	HSD42-XX-XX			
B			APPROVAL:	SHEET: 2 / 2				
A	01-SEP-2009	(PC0001)	Ken	Chao Peng	PROJECTION:			
REV	DATE	FILE	BY					