

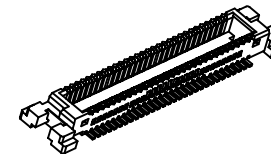
1

2

3

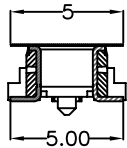
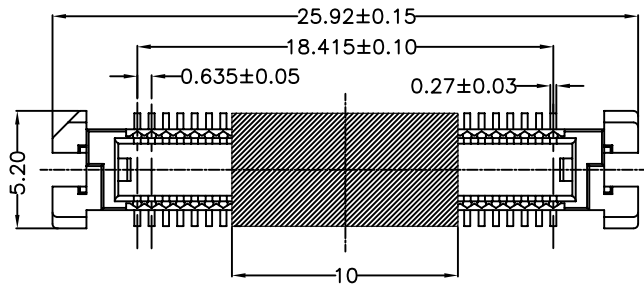
4

5

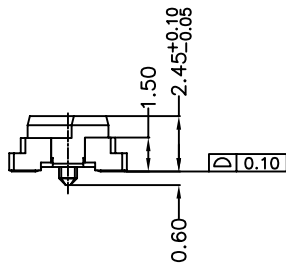
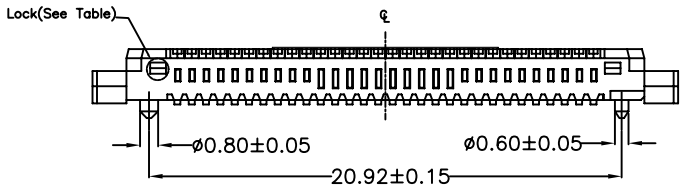


Specifications:

1. Current Rating : 0.5A AC/DC
 2. Voltage Rating : 50V AC/DC
 3. Contact Resistance : 30m ohm. max.
 4. Insulation Resistance : 100M ohm. min.at 100V DC
 5. Withstanding Voltage : 100V AC for one minute
 6. Operating Temperature Range : -20°C to +105°C
- Material and Plated
- 1.Housing :High Temp. Plastic (LCP UL94V-0)
Color :White
 - 2.Contact : Phosphor Bronze
 - 3.Plated : Gold Plated

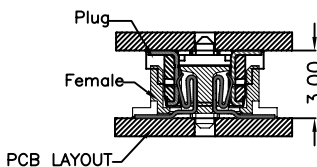
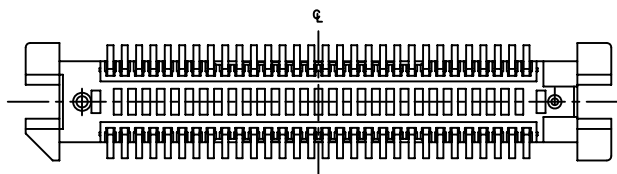
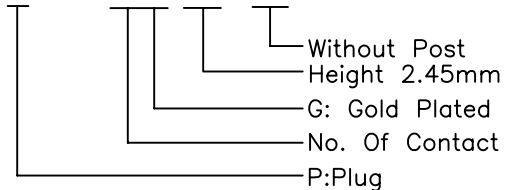


Section:A-A

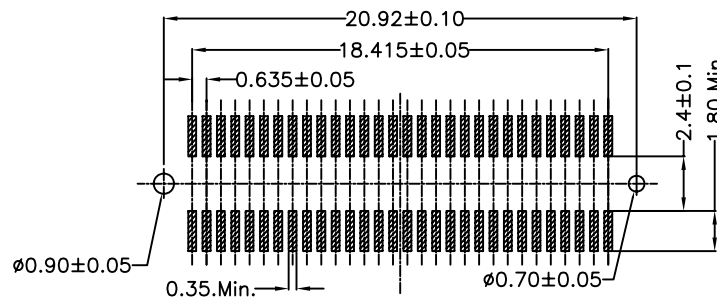


How To Order

BBP0635-60G-245-PN



PCB LAYOUT
Mating Drawing (Ref)



PCB Layout

RoHS Compliant

F				DRAWN:	GENERAL TOLERANCE:		DESCRIPTION: 0.635mm Board To Board Plug 2.45mm Height SMT Type	SIZE A4
E			Ken	.X=±0.20 .XX=±0.15				
D			CHECKED:	UNIT: MM				
C			Lily Chou	SCALE: 1:1				
B			APPROVAL:	SHEET: 1 / 1	PART NO:	BBP0635-60G-245-PN		
A	08-SEP-2013	(PC0001)	Ken	PROJECTION:				
REV	DATE	FILE	BY	Chao Peng				